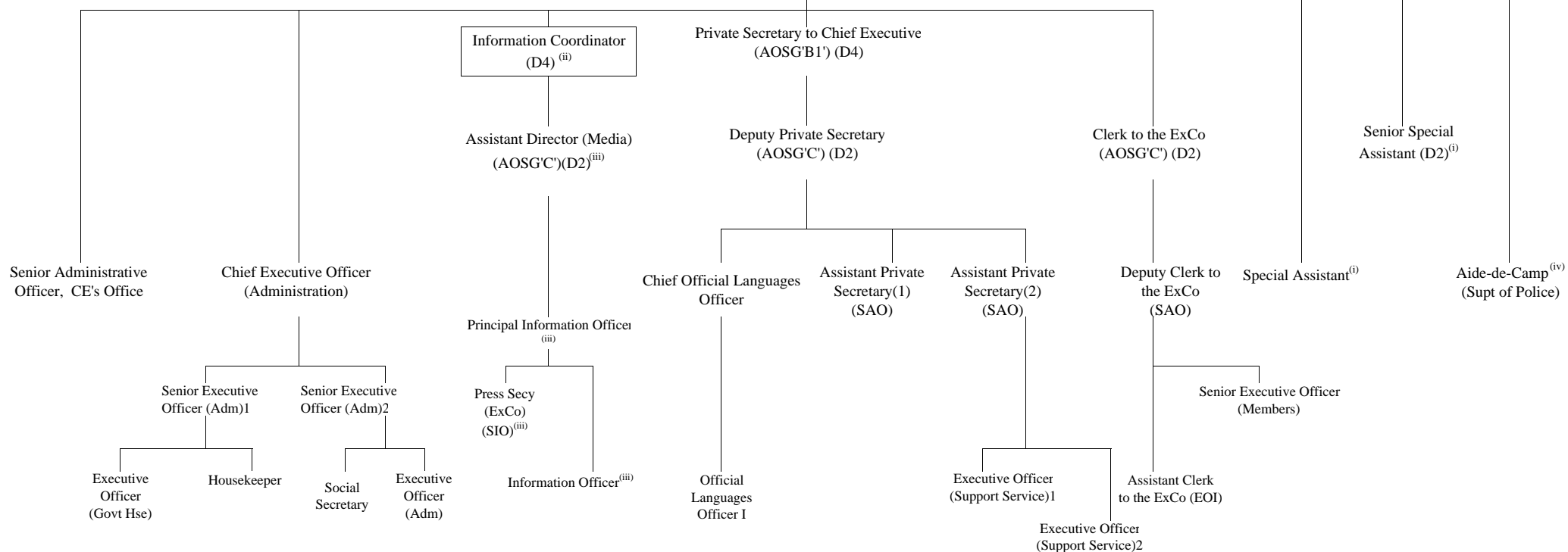


# Proposed Organization Chart of the Chief Executive's Office

## The Chief Executive

### Director of the Chief Executive's Office<sup>(i)</sup>

#### Permanent Secretary, Chief Executive's Office (AOSG'A')(D6)



### Footnotes

- ☐ Posts/Positions to be created  
 (i) Non-civil service appointment  
 (ii) Civil service post or non-civil service appointment  
 (iii) On establishment of ISD  
 (iv) On loan from HKPF