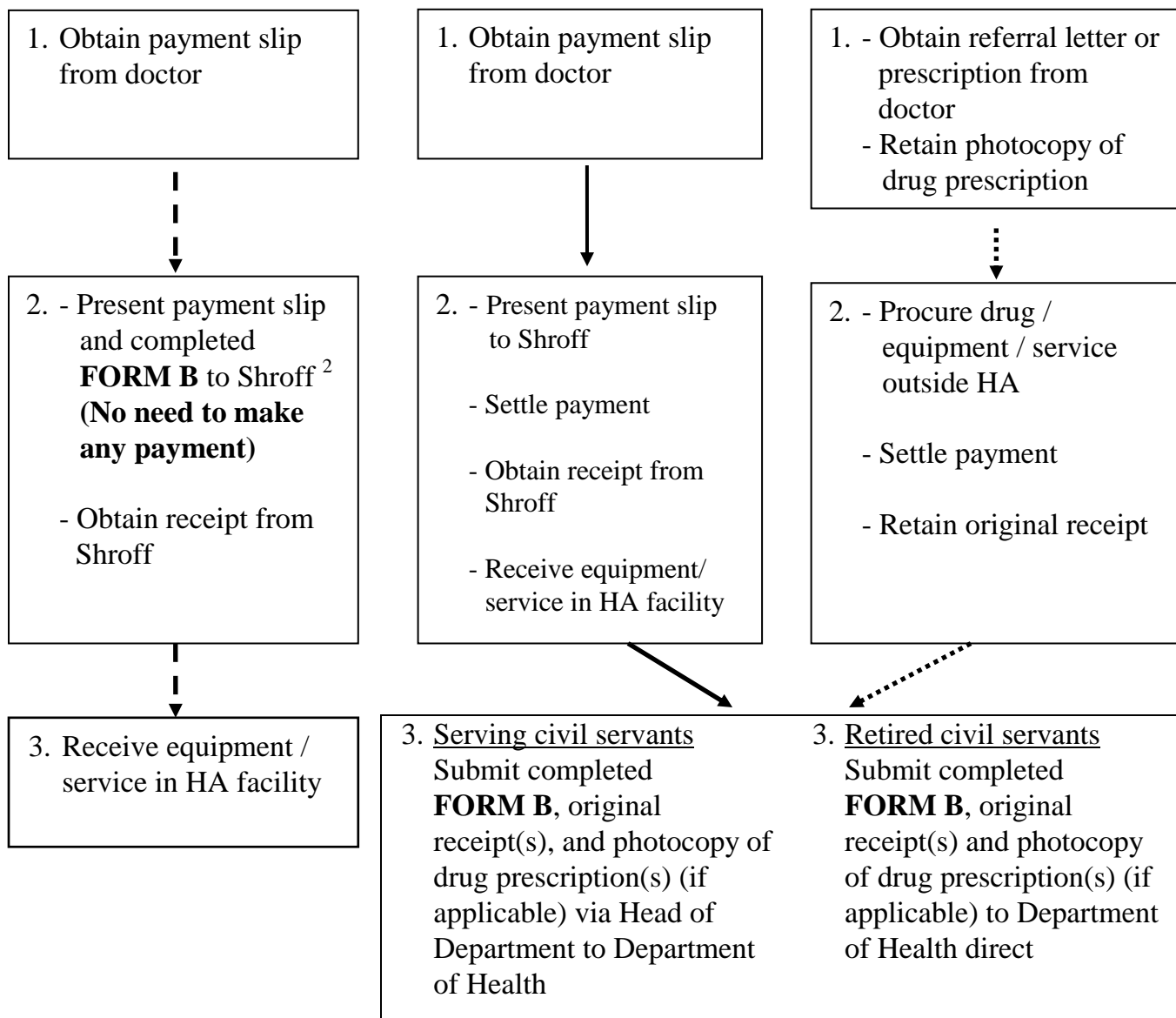


**Application for Direct Payment / Reimbursement of Medical Expenses  
(Except Drugs Provided by the Hospital Authority (HA))**

**(i) Direct Payment from Department of Health for specified equipment/services provided by HA<sup>1</sup>**

**(ii) Reimbursement for other chargeable equipment / services provided by / through HA**

**(iii) Reimbursement for drugs / equipment / services not available in HA**



**Notes:**

- Copy of FORM B is attached to CSB Circular No. 2/2013, and is also available at CSB's website (<http://www.csb.gov.hk/english/admin/benefits/64.html>) (<http://www.csb.gov.hk/english/pension/med/558.html>). A limited supply of forms is also available from the shroff of major HA hospitals.
- Please submit FORM B through the Medical Records Office at the HA hospital for the attending doctor's assistance in completing Part A therein as necessary.

<sup>1</sup> Including (a) percutaneous transluminal coronary angioplasty (PTCA) procedures; (b) intraocular lens operation; (c) non-PTCA consumables for interventional cardiology; and (d) positron emission tomography (PET) service.

<sup>2</sup> Civil service eligible persons should submit FORM B to Shroff before the equipment / service is provided, unless otherwise advised by the attending HA facility concerned.